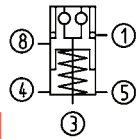


No. 6108LA-XX-08

Installation clamping module for automation solutions

Pneumatic opening.
Pneumatic blow-out.
Opening operating pressure:
K10.3 min. 5 bar
K20.3 min. 4.5 bar
Cover and piston hardened.
Repeat accuracy < 0.005 mm.
With locking control (pneum.)
and support control (pneum.).



Order no.	Size	Pull-in/locking force up to [kN]	Holding force [kN]	Blow out	Weight [Kg]
550257	K10.3	10	25	●	1,4
550258	K20.3	17	55	●	2,6

Design:

Centric blow-out, support control and locking control.

Application:

Zero-point clamping system for automation solutions for set-up-time-optimised clamping with cutting and non-cutting processing in all areas, also in the food, pharmaceutical and chemical industry.

Note:

Locking control: Static pressure with opened clamping module, flow-through only with locked clamping module.

Support control via the blow-out function: Static pressure with supported interchangeable pallet.

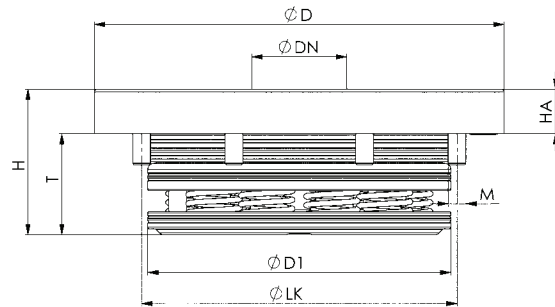
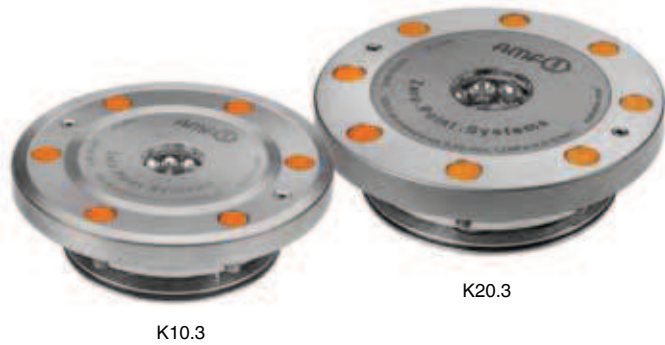
The installation clamping module is opened pneumatically and locked mechanically by spring force. Subsequent uncoupling of the pressure line is possible at any time (module is clamped at normal pressure).

The clamping module has five connections:

- 1 = pneum. opening
- 3 = pneum. blow-out
- 4 = pneum. opening control, inlet
- 5 = ventilation
- 8 = pneum. locking control, inlet

On request:

- Installation diagram
- Further automation options



Dimensions:

Order no.	Size	dia. D	dia. DN	dia. D1	H	HA	dia. LK	M	T
550257	K10.3	112	22	78	35	10	88	6 x M6	25
550258	K20.3	138	32	102	49	15	115	8 x M6	34

CAD



Subject to technical alterations.