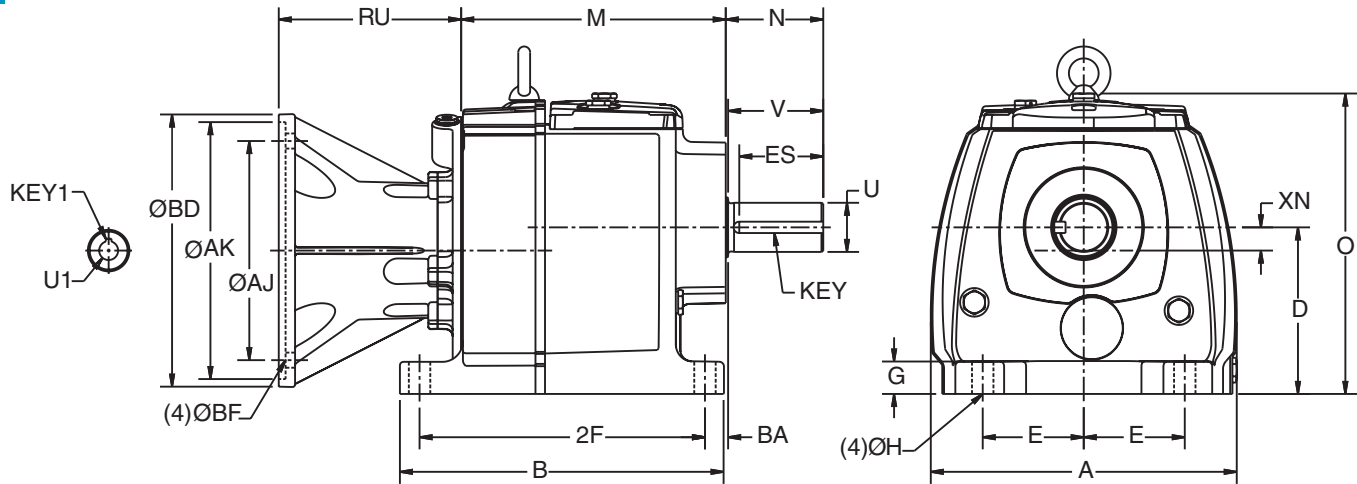


Foot Mounted - Double/Triple Reduction



Gear Frame	A	B	D ¹	E	G	H	M	N	O	U ³	V	BA	2F	ES	XN	Key
34	11.97	10.87	7.09	4.53	1.37	0.71	9.80	3.58	11.89	2.13	3.50	0.98	9.25	3.06	1.02	1/2 Sq.
35	14.19	12.89	8.86	5.51	1.73	0.87	11.34	4.81	14.84	2.38	4.72	1.10	11.02	4.15	1.14	5/8 Sq.

Motor Frame	Gear Frame	AJ	RU	BF	AK	BD	U1	Key1
56C	All	5.875	4.14	0.44	4.50	6.50	0.625	3/16 Sq.
143/145TC	All	5.875	4.14	0.44	4.50	6.50	0.875	3/16 Sq.
182/184TC	All	7.250	5.87	0.57	8.50	9.00	1.125	1/4 Sq.
213/215TC	All	7.250	5.87	0.57	8.50	9.00	1.375	5/16 Sq.
254/256TC	All	7.250	7.09	0.57	8.50	9.00	1.625	3/8 Sq.
284/286TC	34 ⁴ , 35	9.000	8.06	0.57	10.50	11.25	1.875	1/2 Sq.
324/326TC	35 ⁴	11.000	8.79	0.69	12.50	13.38	2.125	1/2 Sq.

¹ Dimension "D" will never be exceeded, but may vary from values shown. When exact dimensions are required, shims up to .03" may be necessary.

² All rough casting dimensions may vary by .25" due to casting variations.

³ Shaft extension tolerance: +.0000"; -.0005" up to 1.5" diameter inclusive. Larger diameters: +.000"; -.001".

⁴ Use foot mounted motor, utilizing separate support of motor feet for this motor frame.